

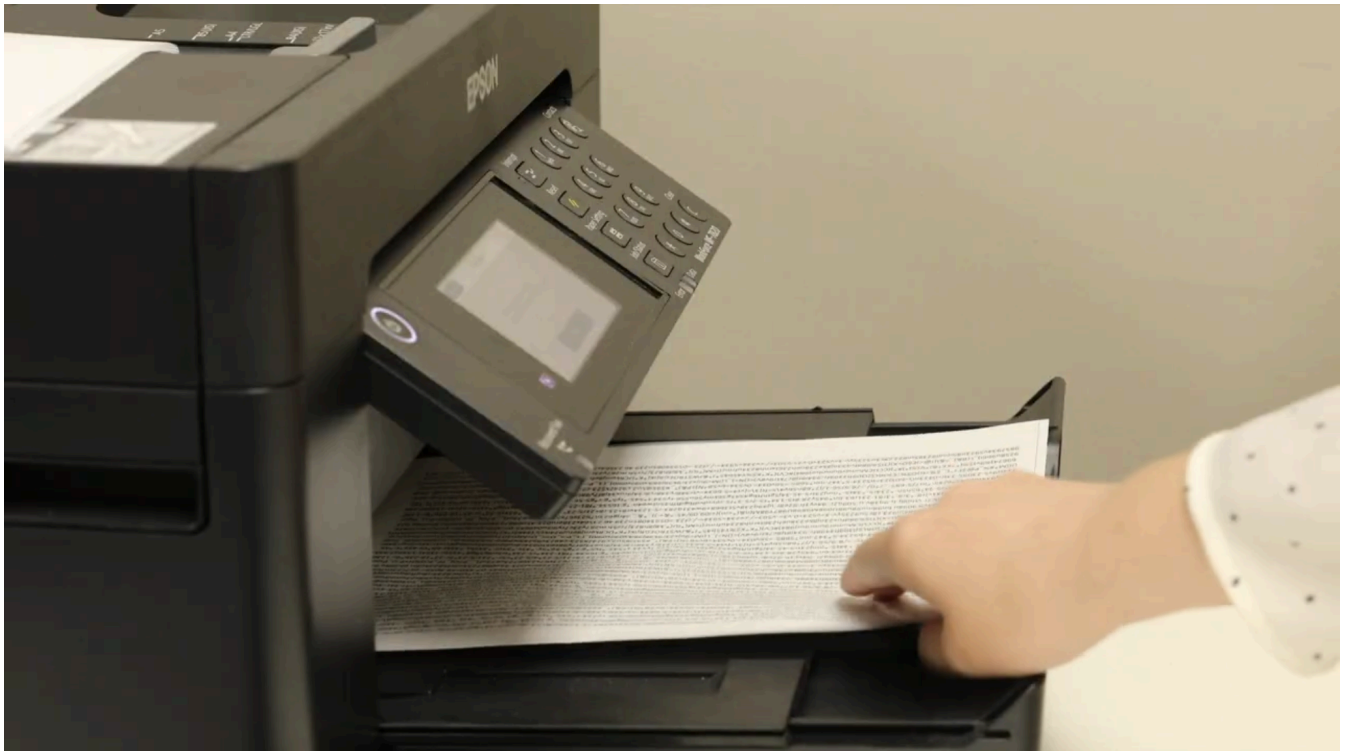
## PTZ Optics - Focus Calibration

Follow the steps outlined below to calibrate the focus for PTZ Optics Move 4K accurately, Link 4K, Move SE, and Studio Pro G3 camera series.

**PLEASE NOTE BEFORE PROCEEDING:** Focus calibration on your PTZ Optics G3 cameras (Move SE, Move 4K, Link 4K, and Studio Pro) should only be performed if our support team recommends it or if you are experiencing focusing issues. This process will erase all previously saved focus settings, and the data cannot be recovered. For detailed guidance on focus calibration, please contact our support team at (484) 593-2247 or via email at [support@ptzoptics.com](mailto:support@ptzoptics.com).

### 1. Set Up Calibration Paper:

Print out the [calibration sheet](#).



Securely attach the paper to a solid-colored wall with no open area visible behind the wall. Ensure that it's fastened to remain stationary throughout the calibration process.



**2. Position the Camera:**

**Place the camera on a stable, level surface. It should be positioned so that, when zoomed out fully, the camera frame still encompasses the entire wall.**



**Follow the recommended camera placements based on lens type for:**

**Move/Link 4K, SE Lens Type:**

12X: 1 meter or 3.28 feet

20X: 1.5 meters or 4.92 feet

30X: 1.5 meters or 4.92 feet

### **3. Alignment:**

**Ensure the center of the calibration paper aligns with the center of the camera's image. For optimal results, ensure that the camera and the paper are square or parallel.**

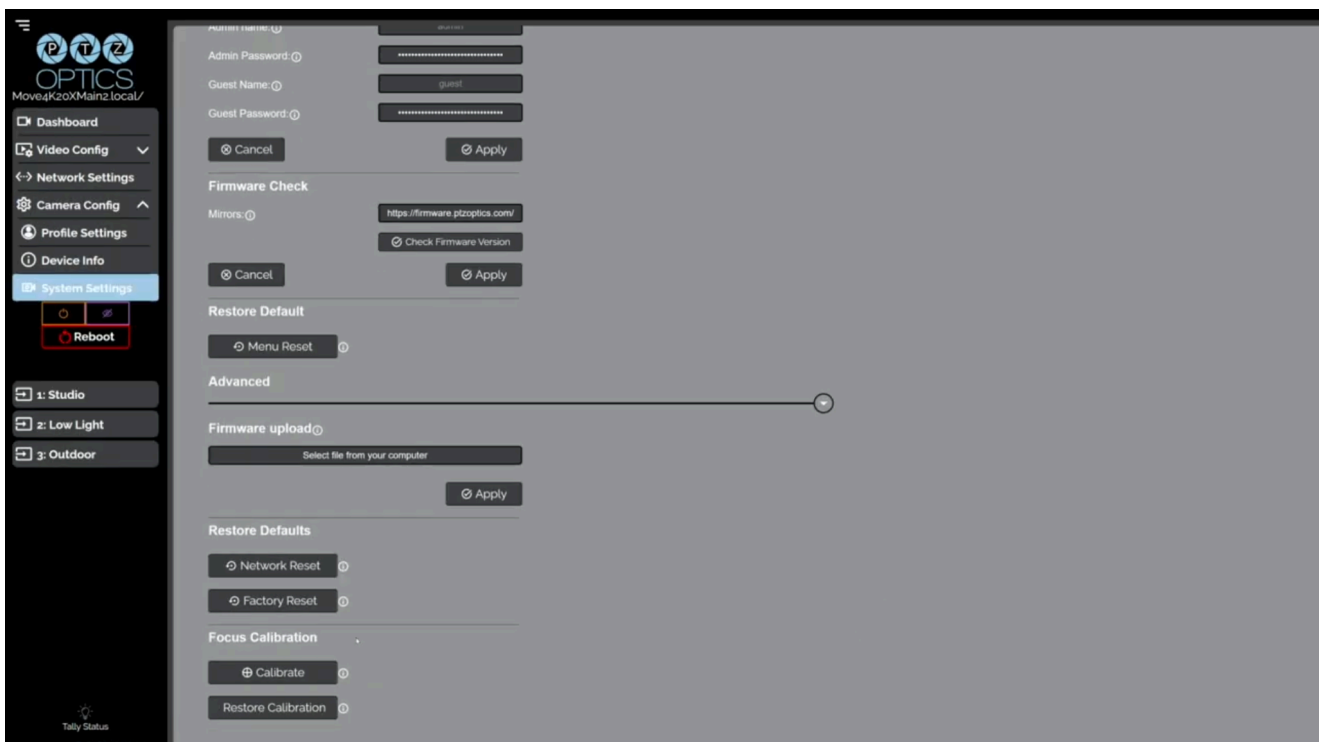


### **4. Start the Calibration Process:**

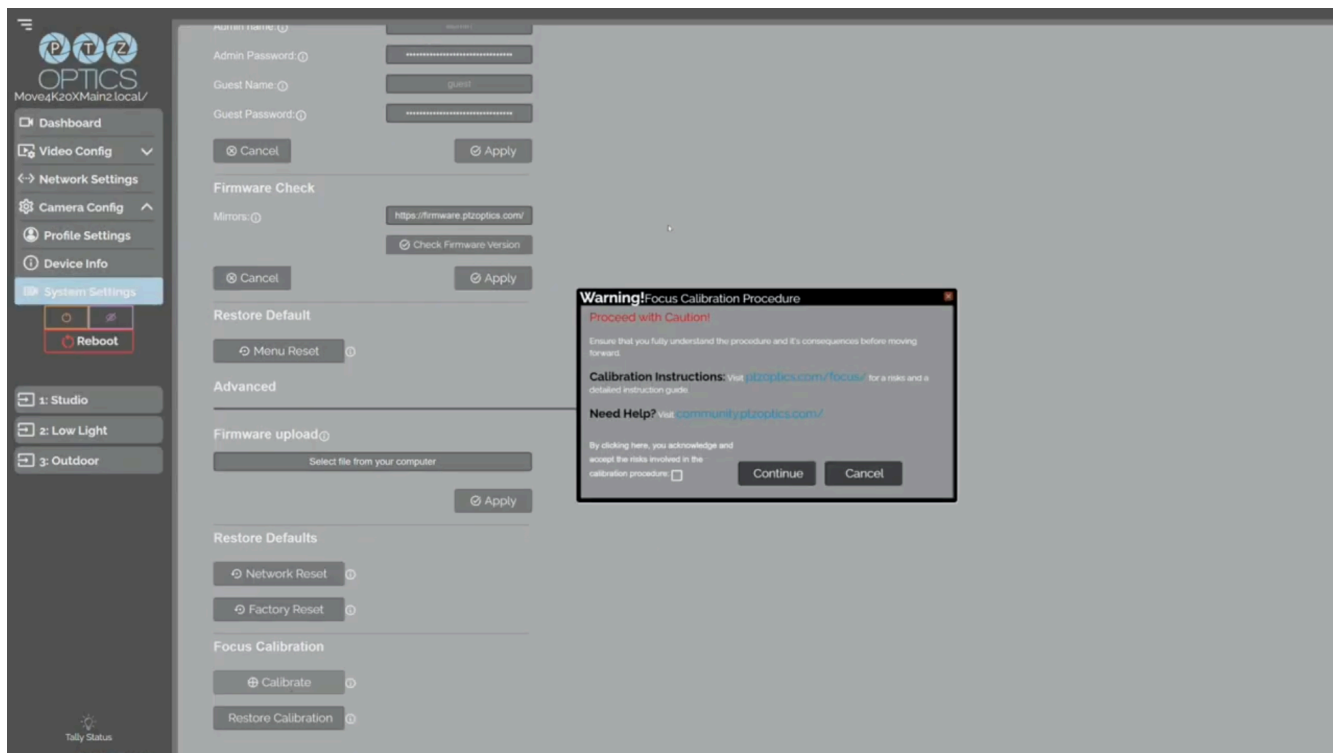
**Access the System Settings through the camera's web interface.**



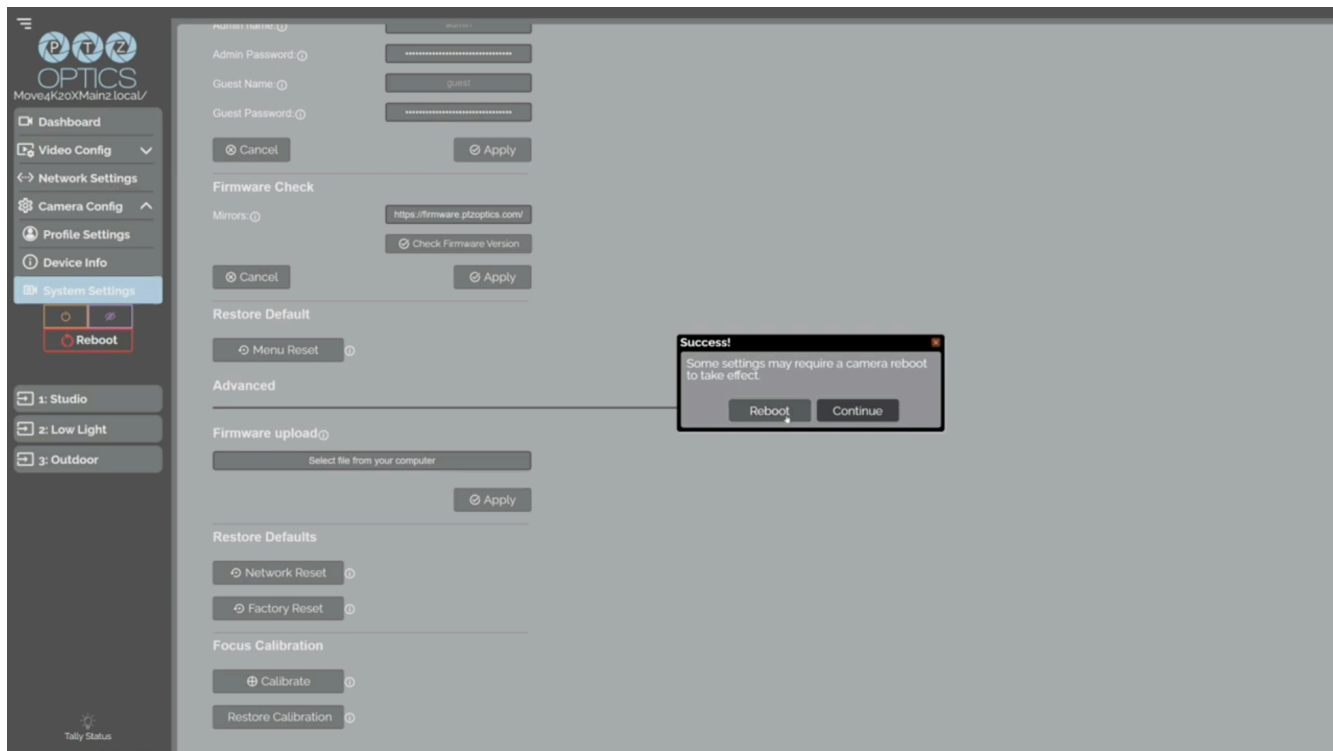
Navigate to the 'Advance' dropdown menu and choose “Calibrate.”



Continue past the warning by clicking the acknowledgment.



**Once the calibration process concludes, reboot the camera.**

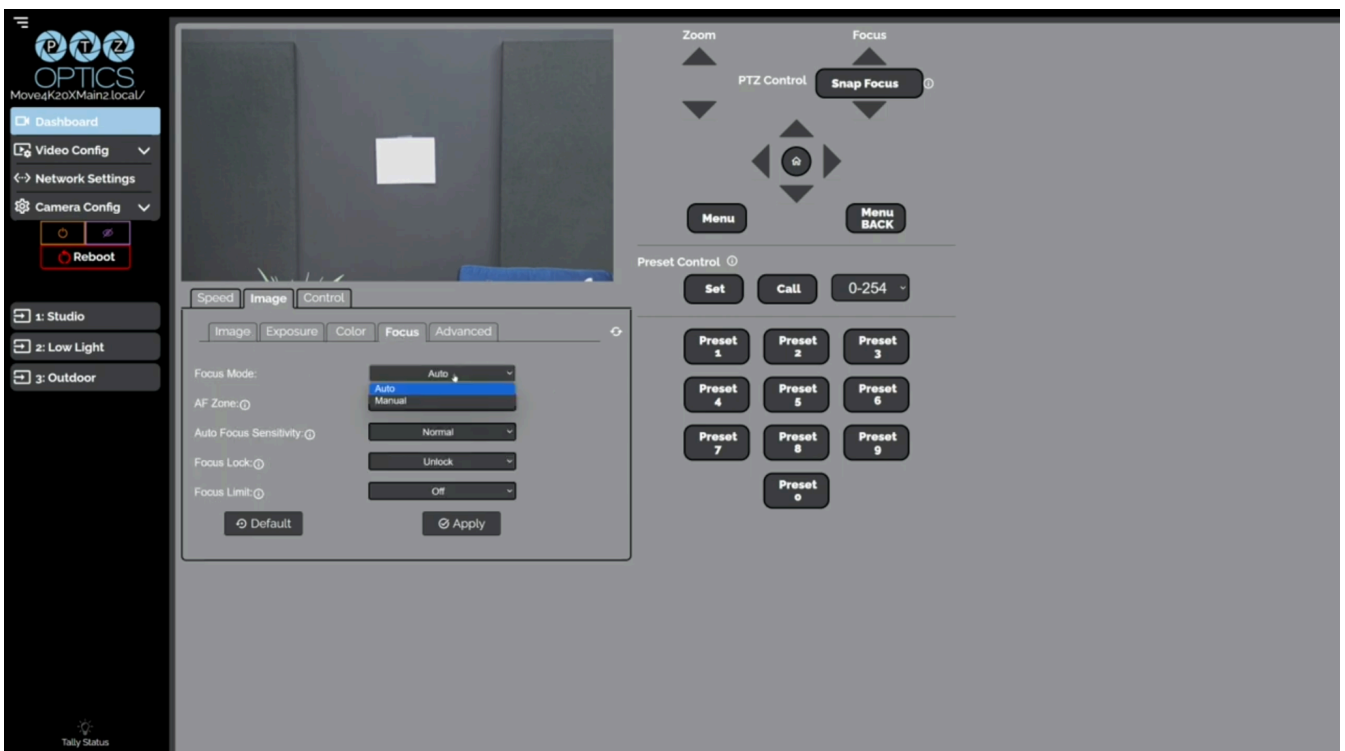


**Camera rebooting.**

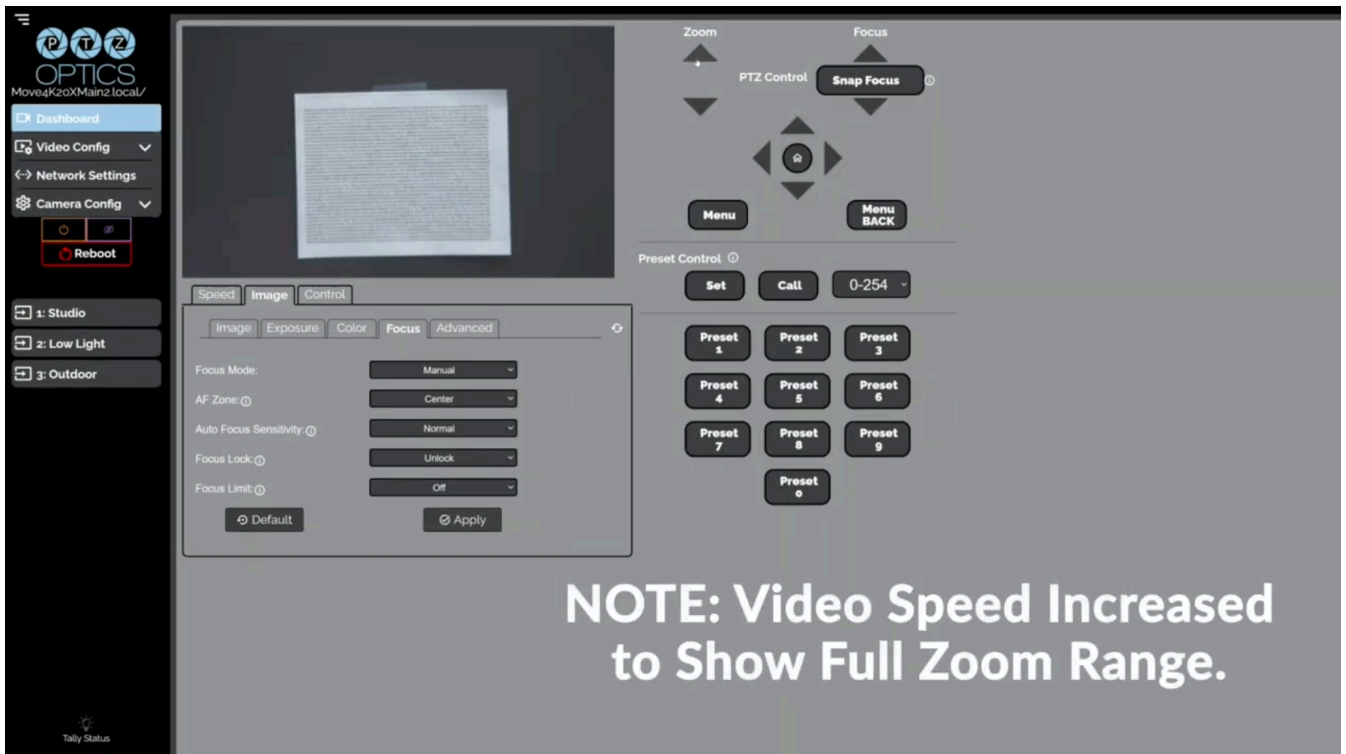


### 5. Verify Calibration:

After the reboot, give the camera a few moments to focus clearly at a wide angle automatically.



Switch to Manual Focus mode, and zoom in and out on the calibration board. The image should remain sharp throughout the zoom range.



You're now in focus!



**Notes:** During calibration, ensure no moving objects or significant light interferences between the lens and the calibration board. The camera should be positioned in a place without any vibrations or movements.

In the event of a power outage during calibration, recalibrate the device once power is restored.